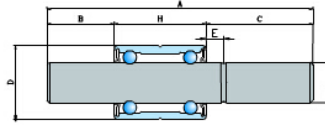


# WB Series



select	Inquiry	Bearing Number	D	L	Boundary dimensions(mm)								
					A	d	B	C	d1	d2	S1	S2 E	
WB1224080	24	27	80	12.008	16.5	36.5							
WB1224080-1	24	27	80.2	12.037	17.4	35.8							
WB1630084	30	27	84	15.918	16	41							
WB1630084-1	30	27	84	16	14	43							
WB1630084-2	30	27.5	84.3	15.918	15.3	41.5							
WB1630084-3	30	38.9	84.33	15.918	14.34	31.09					23.83		
WB1630084D	30	27	84.3	15.918	20.8	36.5		12.008			34.5		
WB1630084D-1	30	27	84.38	15.918	20.57	36.81		12.088			35		
WB1630084D-2	30	32.7	83.6	15.918	17.15	33.75		12			31.75		
WB1630085	30	27	85	15.918	15	43							
WB1630085-1	30	27	84.51	15.918	17.25	40.26						37.26	
WB1630085-2	30	27.94	84.51	15.918	17.37	39.2						33.32	
WB1630085-3	30	33.45	85.4	16	16.15	35.8							
WB1630085D	30	27	84.63	15.918	17.27	40.36		12.038			38.36		
WB1630085D-1	30	27	85	16	17	41		12.052			39.5		
WB1630085D-2	30	27	85	15.918	21	37		12.038			35.3		
WB1630085D-3	30	27	85	15.918	17	41		12			38.5		
WB1630085D-4	30	27	85	15.918	17	41		12.038			35		
WB1630085D-5	30	27.9	85	15.918	17	40.1		12			36		
WB1630085D-6	30	38.9	85.2	15.918	31.1	15.2	12.042			29.2			
WB1630086	30	30	86.2	15.918	16.3	39.9							
WB1630086D	30	27	86.2	15.918	19.3	39.9		12			36.9		
WB1630086D-1	30	30	86	15.918	16.5	39.5		12			37		
WB1630087	30	30	86.5	15.918	12.3	44.2					41.2		
WB1630087D	30	30	87	15.918	15	42		12			39.5		

WB Series

WB1630088	30	38.9	87.6	15.918	13.7	35					
WB1630088-1	30	38.9	87.5	15.918	15	33.6					
WB1630088-2	30	27	88	15.918	18	43					
WB1630088-3	30	38.9	88	15.918	12.5	36.6					
WB1630088D	30	27	88	15.918	18	43	12		7.5		